

## HAAPSALU UKSETEHASE AS

Masti tee 8, 90401 Uuemõisa, Lääne County, Estonia  
tel. +372 47 20 800, fax +372 47 20 803, [www.uksetehas.ee](http://www.uksetehas.ee), [info@uksetehas.ee](mailto:info@uksetehas.ee)

### Instructions for use and maintenance of doors

The quality door manufactured by Haapsalu Uksetehase AS has a two-year warranty. The warranty given for defects in materials and manufacturing does not cover deviations in the quality of the door resulting from normal wear and tear, such as wear and tear of the threshold finish, door sagging and changes in passage gaps, etc., and errors due to incorrect installation. In order to use the purchased product for many years without problems, carefully follow the recommendations given in the instructions below. **More detailed installation and maintenance instructions for exterior, fire, and soundproof doors, as well as warranty and installation conditions, are given in separate documents that can be found on the website [www.uksetehas.ee](http://www.uksetehas.ee).**

#### Upon receipt of the order:

Check that the specification and quantity of the goods correspond to those indicated in the accompanying documents/invoice. Certified doors have the corresponding markings on the hinge side at the height of approx. 1700 mm. Please submit comments and complaints to the seller within seven days of receipt of the goods.

To protect the products from dirt and possible mechanical damage during transport and handling, the door sets are always delivered assembled and packed in a polyethylene plastic bag. Corrugated cardboard boxes are attached to the longer sides of the frame for extra protection. One side of the box shall bear the following information:

- production order number;
- customer ID
- production order pos. No
- door set dimensions or module designation, e.g., M10x21
- the handiness of the door set.

Transport packaging is not suitable for the long-term storage of products on site. In the event of transport damage, a corresponding note must be made on the consignment note of the transport company upon receipt of the goods. It is not permitted to install a defective or damaged product without the permission of the manufacturer! The door factory does not reimburse the additional costs caused by the installation of damaged products.

#### Pre-installation storage

The doors are packed in a transport package that only protects the door set during transport and handling. When moving by hand, it must be taken into account that larger door sets can weigh more than 80 kg, in particular, to avoid falling into a corner. Doors must be stored indoors at a dry and even temperature; outdoor storage is not permitted! The products must be stacked horizontally on a flat and dry base with at least three supports of the same thickness per door height to distribute the weight evenly. Veneered doors must be protected from direct sunlight to prevent fading and the resulting differences in color shade. The doors are made of wooden materials, which tend to swell under the influence of moisture, and in the worst case, this can lead to cracking of the finishing layer and breakage of the adhesive joint. *The manufacturer accepts no liability for moisture damage caused by improper storage or processes in progress or on-site (casting, tiling, finishing, etc.).*

---

## Installation of doors

Interior doors are intended for use in heated rooms, not suitable for use as an exterior door or as a partition doors in interior rooms with a temperature difference of more than 5°.

Installation work should be done very carefully, and we strongly recommend using an experienced installation team.

The manufacturer is not responsible for errors or possible inconveniences during operation due to incorrect installation.

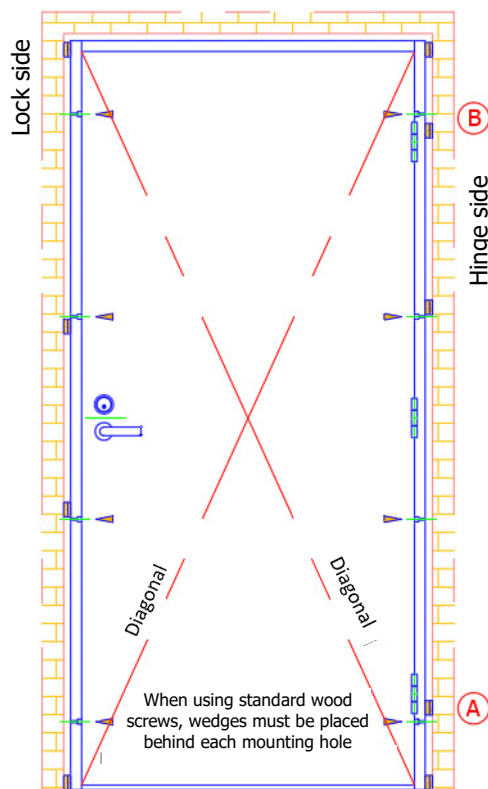
**The door leaf or the frames must not be machined or adjusted in any way, and they must not be fitted with accessories not intended for them!**

When installing the door set, proceed as follows:

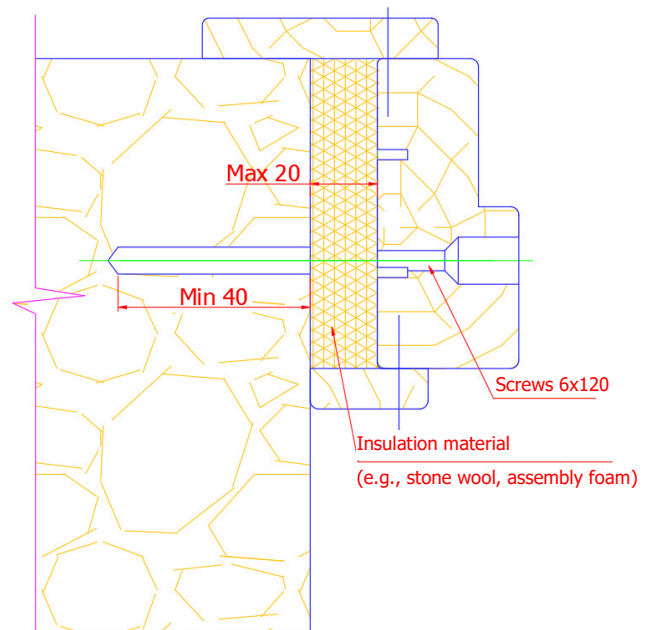
1. Carefully remove the door from the packaging, then remove the door leaf from the frame. Lean the door leaf stably on the side of the adjacent wall, first placing pieces of corrugated cardboard between the lower edge of the door leaf and the floor and between the upper edge and the wall to prevent damage to the door leaf or wall.
  2. Make sure that the structural opening in which you want to install the door is 20-30 mm larger than the external dimensions of the frame; the maximum permitted distance on both sides is 20 mm and on the top is 30 mm. If the sealing cracks are larger, the opening must be corrected.
  3. Make sure that the surface below the door sill is smooth and level. If necessary, support the gap under the door threshold with wedges or wooden blocks to prevent possible deflection when stepping on the threshold.
  4. Raise the frame into the opening and fix it with wedges from the upper and lower corners at right angles to the vertical position (see **Figure 1**); check the leveling of the top jamb with a spirit level. The structural opening in which you start to install the door must be dry!
  5. Start attaching the frames to the lower hinge of the vertical frame on the hinge side; if necessary, drill a hole in the wall through the mounting hole in the frame for the dowel. Place additional wedges or support block above the mounting hole (behind the lower hinge) and secure the frame firmly with the Ø6\*90/120 mm screws, see **Figure 1 pos. A**. Fasteners must be selected according to the type of wall (concrete, brick, lightweight block, wood, etc.), if necessary, consult the seller of fastening accessories. The depth of the screw fastening in the wall must be at least 40 mm. The recommended installation is with special adjustable frame screws Ø6\*120 mm (JAMO Schraube Typ 4, AW 30, galvanized steel, manufactured by Adolf Würth GmbH & Co. KG). If the gap between the wall and the frame is 10 mm or less, screws measuring Ø6\*90 mm can be used for installation. Plastic or metal dowels with min. dimensions Ø8\*40 mm according to the wall type can be used.
  6. Then place additional wedges/a support block under the upper mounting hole (behind the upper hinge), double-check the verticality of the hinge-side upright frame with a long spirit level, and fasten, see **Figure 1 pos B**.
  7. Proceed in the same way with the rest of the mounting holes on the hinge-side vertical frame, make sure that the frame is not curved and is completely vertical, then tighten the screws completely. If special ex-post-adjustable frame screws are used to fasten the frame, the wedges can be omitted in some places behind the mounting holes, but in no case at the outer corners or behind the top/bottom hinge, see **Figure 1**).
  8. Wedge, support, and secure the vertical frame on the lock side of the frame by from time to time checking the verticality with a long spirit level. Check that the door opening (light opening) is of the same width; if necessary, adjust with screws and wedges. Place the door leaf in the frame.
-

Check that the door leaf opens and closes freely and, if necessary, make ex-post adjustments to the vertical frame on the lock side so that the front surfaces of the door leaf and the frame are flush with the entire height of the frame. The locking of the wind latch and the pressure on the seals can be slightly adjusted with a lock strike after final installation and sealing.

9. Check that the passage gaps between the door frame and door leaf are equal and within the range of 1.5-3 mm. Fine adjustment of the clearances is made after the final installation and sealing of the frame. The instructions for adjusting the various hinges can be found on the website <https://www.uksetehas.ee/dokumendid-ja-juhendid/>. You must also ensure that there are no cracks between the upright frames and the upper beam/door threshold; if necessary, tighten the corner wedges.
10. Check that the diagonals are even and the upright frames are vertical in both directions, then tighten the locking screws on the lock side completely.
11. The mounting holes shall be covered with plastic caps (included).
12. The crack between the door frame and the wall is sealed with insulating material (e.g., stone wool, glass wool, assembly foam); see figure 2. When filling with assembly foam, follow the foam's instructions for use. **NB!** If excessive foam is inserted into the gap between the frame and the wall, there is a risk that the frame will be deformed when the foam hardens, making it impossible or complicated to use the door (see figure 4).
13. The installation gap is covered on both sides with suitable slats, in a thickness of 12 mm.



**Figure 1.** Fixing the door frame in the structural opening. In order to prevent jambs from twisting and to tighten the cracks between the vertical frames and the upper beam and the door threshold, paired wedges or support blocks must also be placed in the lower and upper corners



**Figure 2** The installation gap between the door frame and the door opening is filled with insulating material (e.g., stone wool, glass wool, assembly foam). When using foam, make sure that there is room for the foam to expand and that the edges of the foam do not extend beyond the edge of the frame after expansion.

**Remember!** Exterior doors can be heavy, and care must be taken when moving or installing them manually. Check the locking of the tumbler manually.

**For fire-, sound- and smoke-proof doors and exterior doors, read the special installation and maintenance manual!**

## Use and care

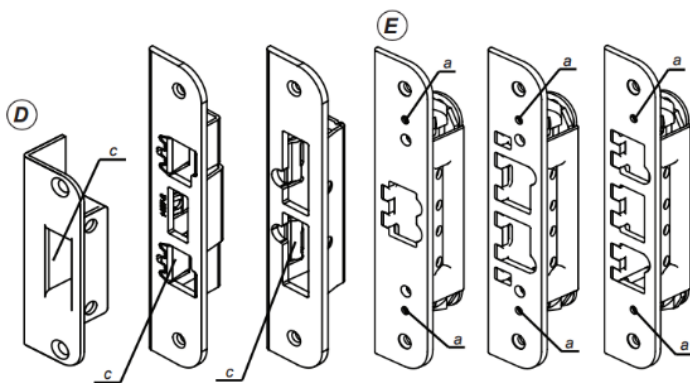
- Do not try to open and close the door by force if it is difficult to open and close the door due to contact between the door leaf and the frame - you can damage both the door leaf and the frame. If necessary, adjust the position of the door in relation to the frame, as this is due to either the movements of the building structure, expansion due to moisture, or deformations from the loosening of the lock or hinge fasteners. If necessary, contact the company that installed the door for help.
- Avoid rapid closing of doors (especially doors with glass) due to drafts!
- Do not hang exercise equipment or a wet towel on the door!
- A door stop must be used to limit the movement of an internal door with an L-frame! Opening more than 90° breaks the hinges and may break the edge of the door leaf.
- The door must be opened and closed by the handle, not by pulling or pushing it by the edge of the door leaf. The finish on the edge of the door leaf gets dirty and worn.
- The seal on doors with unspecified soundproofing is for a softer closing of the product, and its purpose is not to 100% prevent light from shining through the seal.

For more detailed instructions on **hinge adjustments**, see our website [www.uksetehas.ee/dokumendid-ja-juhendid](http://www.uksetehas.ee/dokumendid-ja-juhendid).

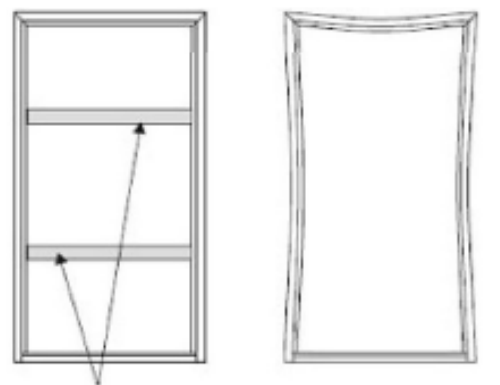
**Remember!** The adjustment of the hinges corrects the position of the door leaf in relation to the frame (passage gaps); it cannot be used to eliminate the curvature of incorrectly installed frames. Regular lubrication of the door hinges twice a year improves their performance and prolongs their service life.

In the case of a product with a **falling threshold**, the adjustment manual is available on our website: [www.uksetehas.ee/dokumendid-ja-juhendid](http://www.uksetehas.ee/dokumendid-ja-juhendid).

**To close the door more tightly, adjust the plate of the lock:**



**Figure 3.** D - Mechanically adjustable by bending the metal tumbler "c." E - Adjust the support surface of the lock plate from the screws "a." By turning clockwise, the door closes more tightly.



Horizontal supports

Deformed frame due to assembly foam

**Figure4.** Sealing the installation gap with assembly foam

## Lock and hinge maintenance

To keep the lock and hinges working flawlessly, oil all moving parts with lock oil at least twice a year.

(except hidden hinges and magnetic locks). The edge of the locking plate must also be oiled so that the door can be closed without pressing the handle down. Check that the bolts on the handle, lock frame, and keyhole are properly tightened. Remember that the locks only work if the doors are properly closed. At least 1x a year, check the passage gaps and adjust the hinges and lock plate. If double seals are used in the doors, the lock tumbler must be manually checked by pulling or pushing the door leaf.

During the operation of the product, the necessary adjustment and maintenance work mentioned above, as well as damage to the product caused by the use of an unadjusted product, are not covered by the warranty.

## Surface care

Varnished, painted, and oil-impregnated surfaces must be kept dry. Any stains must be removed immediately to prevent them from drying or absorbing. Clean the surface of a painted, varnished, or laminated door with a soft cloth, if necessary, using a general cleaning agent in the prescribed ratio with water. The cleaning agent should be sprayed on the cloth, not on the surface to be cleaned. If, after cleaning, the surface remains wet for more than 30 seconds, the surface should be dried, not allowed to dry. We recommend cleaning the door glass with a standard glass cleaner using a soft cleaning cloth.

Do not use disinfectants or solvent organic compounds such as acetone, alcohol, gasoline, nail polish remover, etc., to clean the surfaces of doors and frames. Also, pastes and liquids containing bleaching and abrasive substances, scouring powders, brushes, and other mechanical aids must not be used.

When using disinfectants containing alcohol, never spray them on a painted or varnished surface, but pour or spray them on a soft cleaning cloth and then clean the handles, key sockets, rosettes, and other surface mounted fittings.

## The use of painting tapes and films on doors

When finishing the surfaces adjacent to the door, it may be necessary to cover the door leaf and frames with painting film.

The following must be taken into account when taping:

- Follow the tape manufacturer's instructions.
- The tape used outdoors must be resistant to moisture and UV radiation.
- The surfaces to be taped must be clean and dry.
- Remove the tape immediately after finishing the work. Softeners added to improve the adhesion of the adhesive layer of the paint tape may damage the finish.
- When covering the product only partially from the sun, differences may emerge in the shade between the covered and uncovered parts

*If in doubt about the suitability of the tape, try it on a smaller and less visible surface first.*

*The manufacturer accepts no liability for defects caused by improper use of the tapes - tears in the veneer layer, changes in the color, or removal of the finishing layer.*

The manufacturer reserves the right to make changes.

---