

Installation and maintenance guide for MACO PANORAMA and ROTO PATIO LIFE sliding doors

Date:
27.01.2021
Version: A

Attention! We strongly recommend having the installation done by professionals in the field. This installation guide is helpful in the process but does not provide a manufacturer's warranty.

Safety



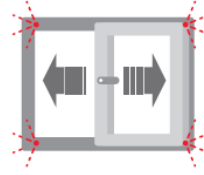
Risk of falling out!



Risk of injury!



Do not add weight to the sash. Risk of damage to the product or the surrounding environment!



Risk of product damage when using excessive force!



Moving weights! The product may be very heavy. It is recommended to lift with suction cups or other lifting aids

Tools needed



Battery drill



Wood drills (Ø 14 and 8 mm)



Silicone gun



Spacers

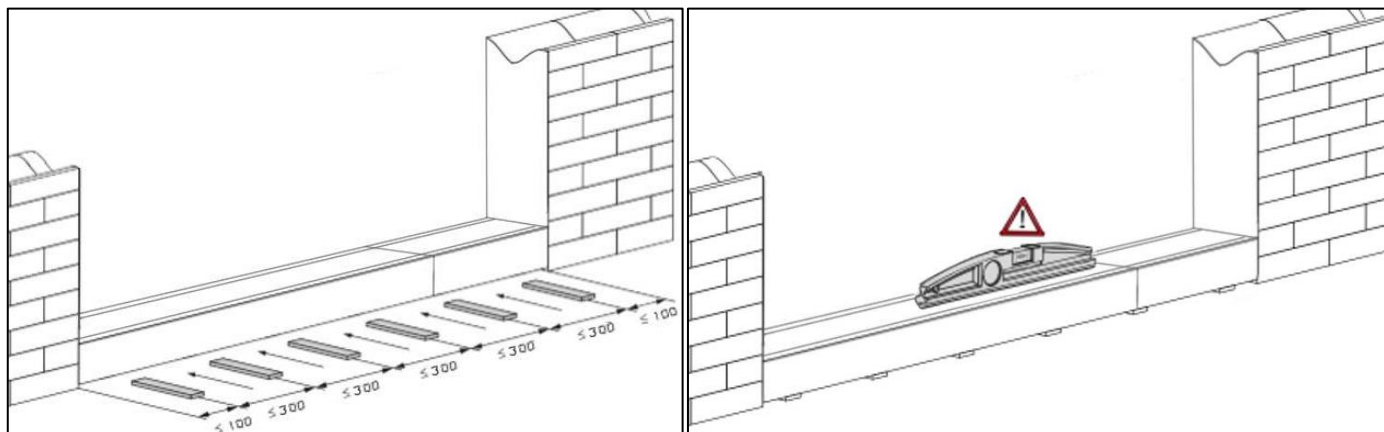


Fasteners

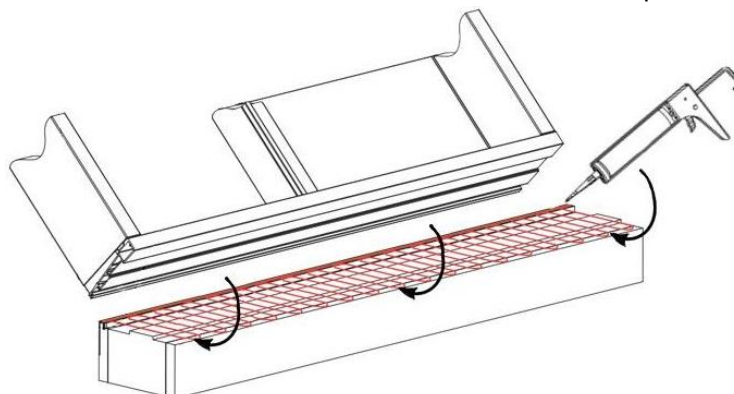
Installation of MACO Panorama and Roto Patio Life sliding doors

NB! It is extremely important that the substrate is completely level and flush. This is especially important for installations without a base profile, where any slight deviation will affect the installation result and the smooth closing/movement of the sliding door and its subsequent use. For this reason, we strongly recommend that you install the product with the base profile and use experienced installers. The base profile reduces the cold bridge, and the whole system is easier to level.

1. Check the opening measurement and make sure there is a sufficient installation gap. For smooth installation, an installation gap of approx. 3-4 cm is required, which simplifies lifting the product into the opening. **NB! The installation gap of the log house is specified by the house manufacturer.**
2. Clean the opening of dust and other construction debris.
3. Install the base profile in the opening and support the profile with spacers. The base profile must be supported by spacers every 20-30 cm (the distance must not exceed 30 cm). The spacers must rest over the entire surface of the base profile. If the spacers are poorly installed, they can sink into the softer parts of the base profile and later affect the functionality of the entire system. It is important to install spacers in the joints of the base profile if the base profile is continued in production.



4. Remove the sash from the frame and lift it into the room. Use suction cups or other lifting aids when lifting!
5. Apply silicone to the base profile and lift the entire window frame onto the base profile.

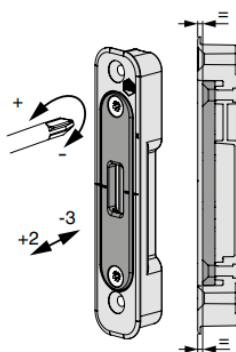


6. After lifting the frame, support the product so that it is stable and does not fall out/tilt out of the opening until it has been finally secured (e.g., with a wedge)
7. Level the frame and then drill 3-4 mounting holes (Ø 14 mm, ~ 15 mm deep) in both frames as evenly spaced as possible according to the wall construction. After drilling the Ø14 mm mounting holes, if necessary (from the bottom of the Ø14 opening), drill the screw and dowel holes (with a Ø 8 mm drill).
8. Fasten with mounting screws according to the wall construction (e.g., JAMO Schraube Typ 4, Ø6 x 120 mm)
9. Drill one mounting hole (Ø 14, ~15 mm deep) in the top frame near the mullion area. In the case of a double-sided door, drill 2 holes in the area of each mullion.
10. Fasten with a standard screw according to the wall construction (e.g., wood/stone screw, Ø6 x 120 mm)
11. Seal the installation gaps on the sides and under the base profile with low-expansion mounting foam. **NB! Seal the upper installation gap with rockwool etc.** Vapor barrier tape must be used on interior side.
12. Put the sash back in the frame and install the cover caps (*not included*) in the drilled mounting holes.

Adjustment

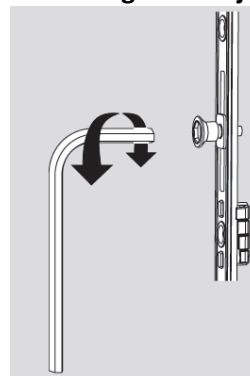
Adjust once a year according to the following adjustment instructions. If the sealing pressure is too high, the handle will move hard. If the seal pressure is too low, the wind will blow in between the seal.

Maco Panorama lifting-sliding door adjustment



The sealing pressure can be adjusted by adjusting the mounting bracket strike

Roto Patio Life sliding door adjustment



Using a 6 mm hex key, the sealing pressure of the sash can be changed by adjusting the cams of the sliding door.

If the adjustment described above is not enough, order the sliding door manufacturer to make a more thorough adjustment.

Installation and maintenance guide for MACO PANORANA and ROTO PATIO LIFE sliding doors

Date:
27.01.2021
Version: A

Maintenance

- The lower guide rail must always be kept clean. It is recommended to keep the sliding door closed during construction to prevent excessive soiling.
- Ventilate and dry hardware and surfaces so that no direct moisture or condensation accumulates (especially important during construction).
- Only clean hardware components with a slightly damp cloth, avoid constant moisture!
- Hardware should be kept free of deposits (e.g., salt in coastal areas) and other dirt. During construction, remove any plaster, putty dust, or other similar dirt immediately.
- The manufacturer recommends using and opening the sliding door at least once a month.

Surface care

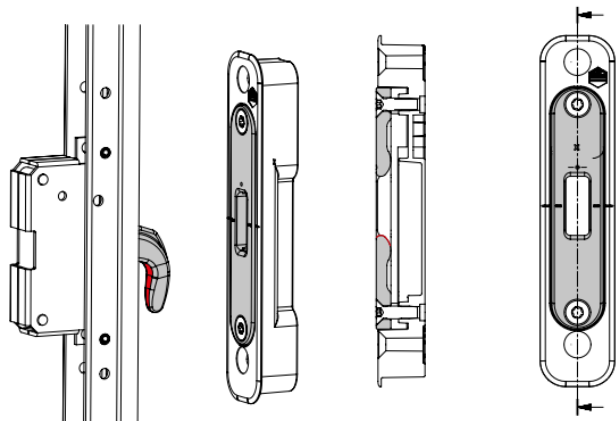
When cleaning the slide doors, use suitable tools with a neutral pH level. Avoid contact with solvents, alcohol, gasoline, or aggressive cleaning agents on wooden surfaces. Do not use abrasive cleaners or cloths.

Lubrication

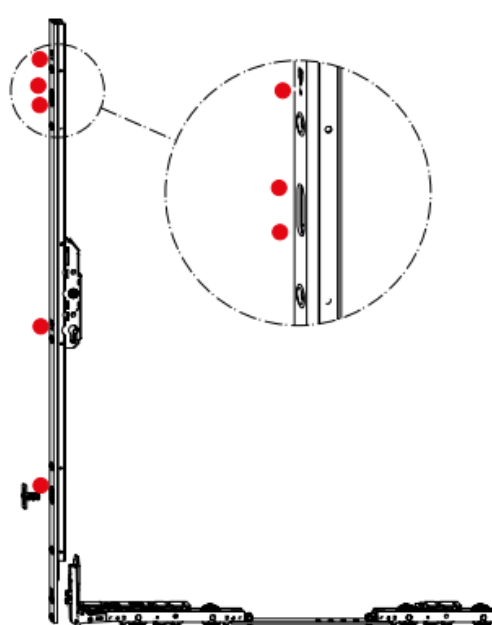
Recommended initial inspection/maintenance 6-12 months after installation (depending on the intensity of use)

Lubricate all moving parts and all locking points at least once a year. Use only acid-free oil or grease. For example: lock oil or lubricating vaseline. *NB! Do not use a rust remover, silicone oil, WD40, or other similar lubricants.*

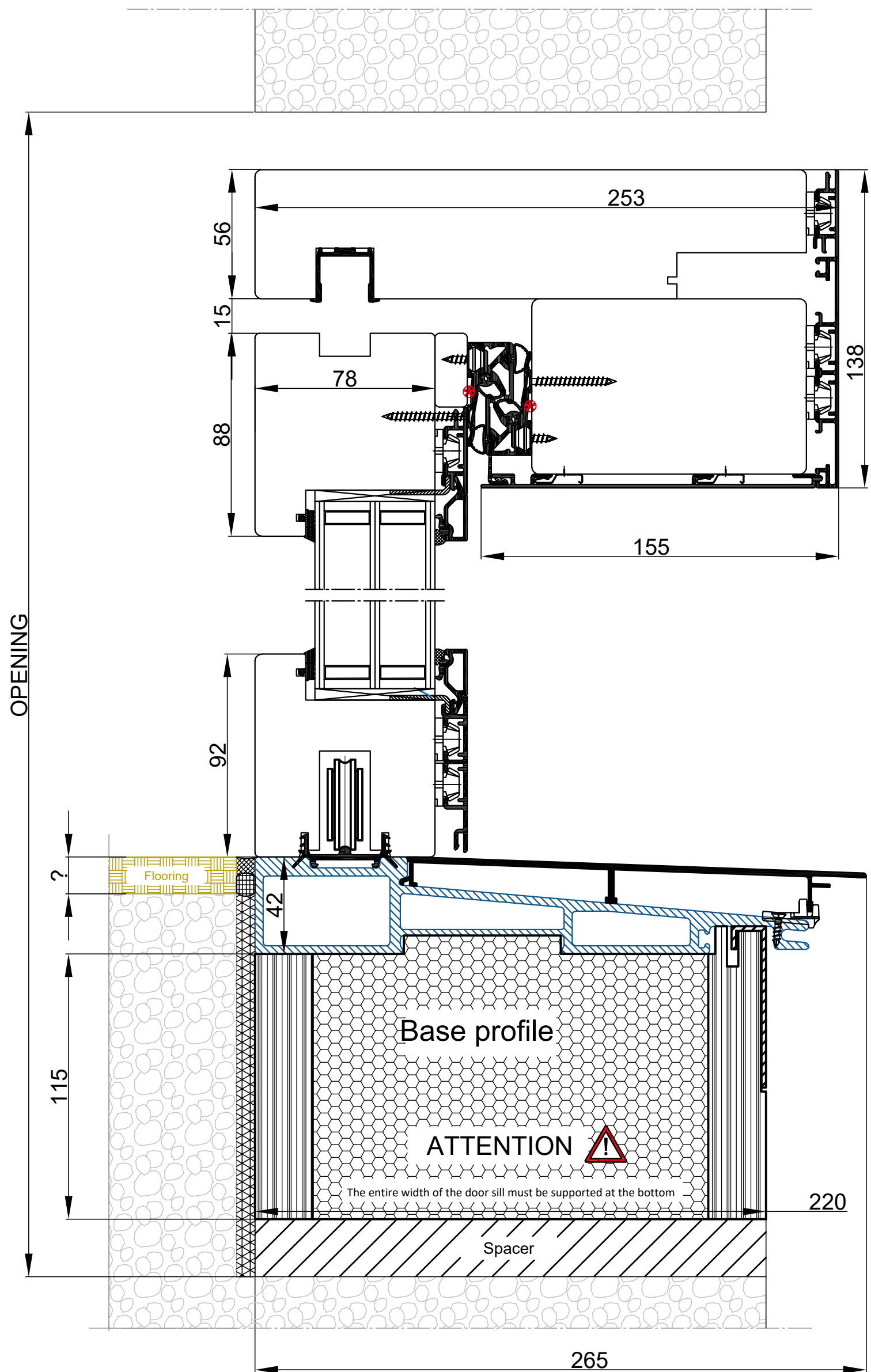
Maco Panorama lubrication points



Roto Patio Life lubrication points



The manufacturer reserves the right to make changes.



Maco Panorama sliding door

Vertical section of the opening part

File: Maco Panorama_HUT

Sheet 1

Sheets 1

Material:

Contracting
Authority

No

Contractor

K.Kadakas

26.01.2021

Checked by

R.Serg

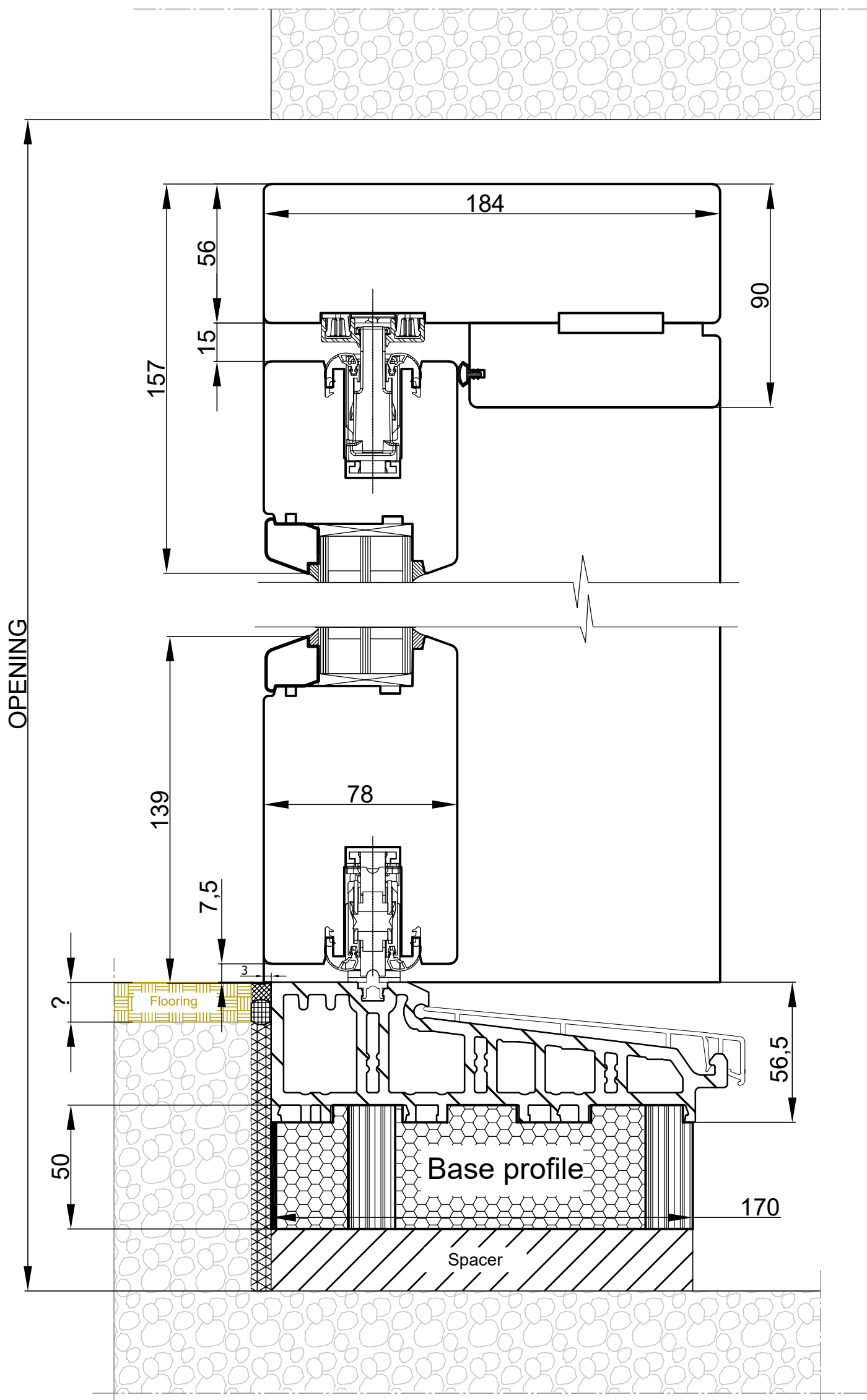
26.01.2021

Other



Masti tee 6 Uuemõisa 90401, Lääne County,
Tel. +372 472 0800, fax: +372 472 0802
Info@uksetehas.ee , www.uksetehas.ee

HAAPSALU UKSETEHAS



<div>Patio Life sliding door</div> <div>Vertical section of the opening part</div>			Contracting Authority		
			No		
			Contractor	K.Kadakas	26.01.2021
			Checked by	R.Serg	26.01.2021
			Other		
File: Roto Patio Life_HUT		Sheet 1	Format	Dimension	<div><div></div><div>HAAPSALU UKSETEHAS</div></div> <div>Masti tee 6 Uuemõisa 90401, Lääne County, Tel. +372 472 0800, fax: +372 472 0802 Info@uksetehas.ee , www.uksetehas.ee</div>
Material:		Sheets 1	A3		