

Fire and smoke resistant EI30 wooden door in steel frame

Product description

Version B, 10.08.2020

NEW product from Haapsalu Uksetehase AS:

Fire and smoke resistant EI30 wooden door in steel frame!

Haapsalu Uksetehase AS in cooperation with AS Saku Metall Uksetehas has developed a new fire resistant wooden door with a durable and reliable metal frame. Metal-framed fire rated wooden door has been specially developed for rooms with very intense use, such as hospitals, hotel rooms, workshops, etc.



Fire rated EI₂30



Sound reduction index Rw 37- 40dB



Smoke resistance S_a and S₂₀₀



Self closing C4

Available sizes

| Standard sizes | Frame outside width [mm] | Clear opening width [mm] |
|--------------------------|--------------------------|--------------------------|
| Single leaf doors | | |
| M7 x 21 | 690 x 2090 | 606 x 2028 |
| M8 x 21 | 790 x 2090 | 706 x 2028 |
| M9 x 21 | 890 x 2090 | 806 x 2028 |
| M10 x 21 | 990 x 2090 | 906 x 2028 |
| M11 x 21 | 1090 x 2090 | 1006 x 2028 |
| M12 x 21 | 1190 x 2090 | 1106 x 2028 |
| M13 x 21 | 1290 x 2090 | 1206 x 2028 |
| Double leaf doors | | |
| M15 x 21 | 1490 x 2090 | 1406 x 2028 |
| M17 x 21 | 1690 x 2090 | 1606 x 2028 |
| M19 x 21 | 1890 x 2090 | 1806 x 2028 |

Other special sizes are available on request.

Glazing

EI30 fire rated glass in different sizes. Glazing beads fixed with stainless steel countersink head screws. Specific weight of fully glazed doorleaf is 37 kg/m².

Additional hardware:

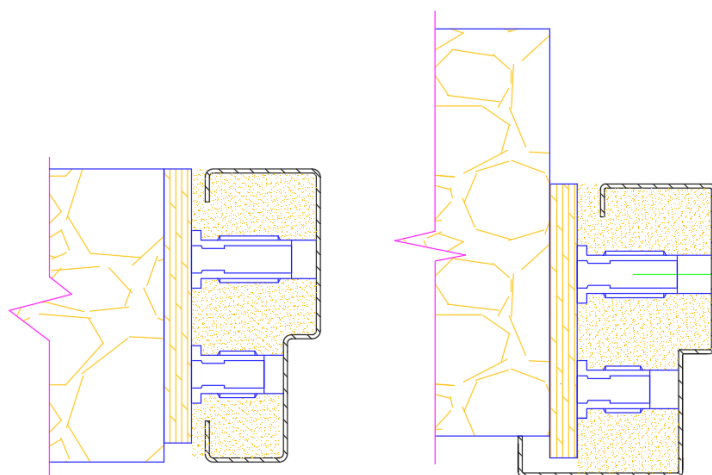
- Door contact
- Letter plate
- Surface applied door closer
- Flush bolt
- Lead cover



Fire and smoke resistant EI30 wooden door in steel frame

Product description

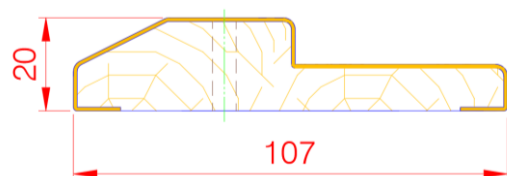
Different frame solutions



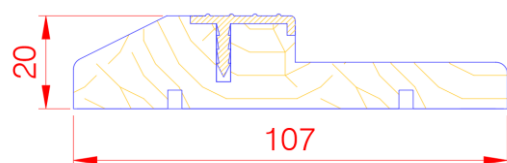
Without architrave

With architrave

Threshold solutions

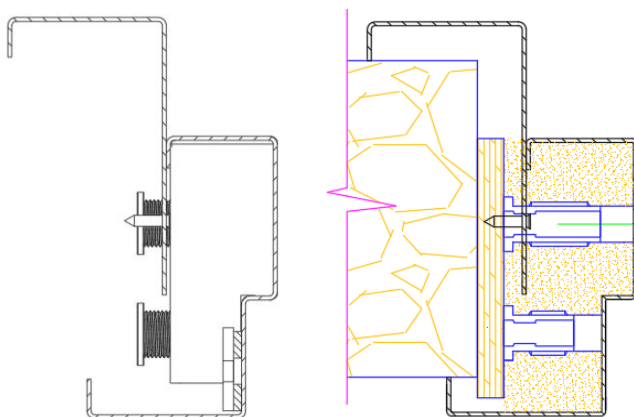


Oak with stainless steel cover
(as a standard)



Oak with aluminium wear strip
(as an extra)

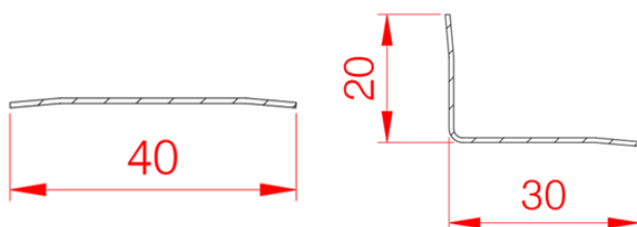
Telescopic frame solution



The telescopic frame allows you to easily adapt to different wall thicknesses.

We offer telescopic frames for wall thicknesses from 90 mm to 355 mm. The adjustment range of the telescopic frame is 17 mm.

Architrave types



Flat trim moulding

Inside corner moulding

Flat trim moulding: 40 x 2500 mm

Inside corner moulding:
20 x 30 x 2500 mm

Material: 0,75 mm painted hot-dip galvanized steel, standard color white NCS S 0502Y

Fire and smoke resistant EI30 wooden door in steel frame

Product description

Used materials

- | | |
|-------------|--|
| Door leaf: | <ul style="list-style-type: none">– Overall door thickness 62 mm– Extruded silicone gasket in the door leaf– Door edges: painted; veneered as an extra– Glazed products: Fire resistant EI30 glass, size limited– Specific weight of solid door without glazing is 30 kg/m² |
| Finishing: | <ul style="list-style-type: none">– Painted, Veneered or HPL 0,6 mm |
| Door frame: | <ul style="list-style-type: none">– Steel door frame with 2 possible frame solutions (specified before)– Mounting holes Ø19 mm with plastic cap– Powder painted from RAL, NCS and RR color card choices, standard color white NCS S 0502Y |
| Hardware: | <ul style="list-style-type: none">– 2D adjustable hinges N3248-110 TMKSS, 3 pc– According to the customer's wishes. For fire proof doors only approved fire resistant locks will be installed/offered. |
| Threshold: | <ul style="list-style-type: none">– With stainless steel as standard (will be fixed to the floor), Oak with aluminium wear strip as an extra |
| Packaging: | Ready-to-install door set wrapped in film with edge protective corrugated cardboard. In case of double leaf doors, the door leaves and frames are packaged separately. |

Requirements and Quality criteria

Directions outlined in RT 42-11058-et, February 2012 „Wooden doorsets“ are followed. For visual quality of paint and final surface appearance of the products SFS 4434 EHD requirements are followed. When assessing the color tone of the veneer, the characteristic pattern, color variation and possible variegation of the wood species must be taken into account.

Use

Fireproof wooden door with a metal frame is intended for indoor use to close openings between fire compartments. For use as an interior door with heavy usage in heated residential and public buildings. The product is not suitable for humid and outdoor conditions, as well as between rooms with very different temperatures.

Health hazards

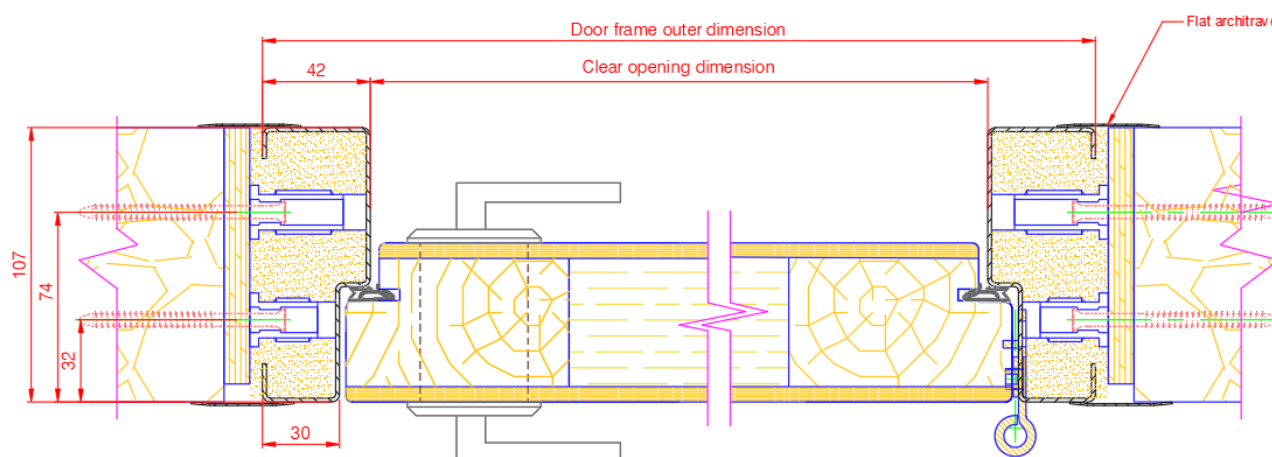
No hazardous materials has been used during the manufacturing process. Glazing in accordance with the approved technical specification of a valid certificate Annex Z.

The manufacturer reserves the right to make changes.

Fire and smoke resistant EI30 wooden door in steel frame

Product description

Door frame without architrave



Door frame with architrave

