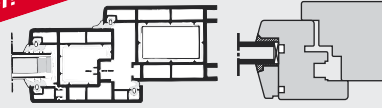


Roto NT

Hinge sides K, A, E5

Adjustment instructions.

Only for qualified personnel!



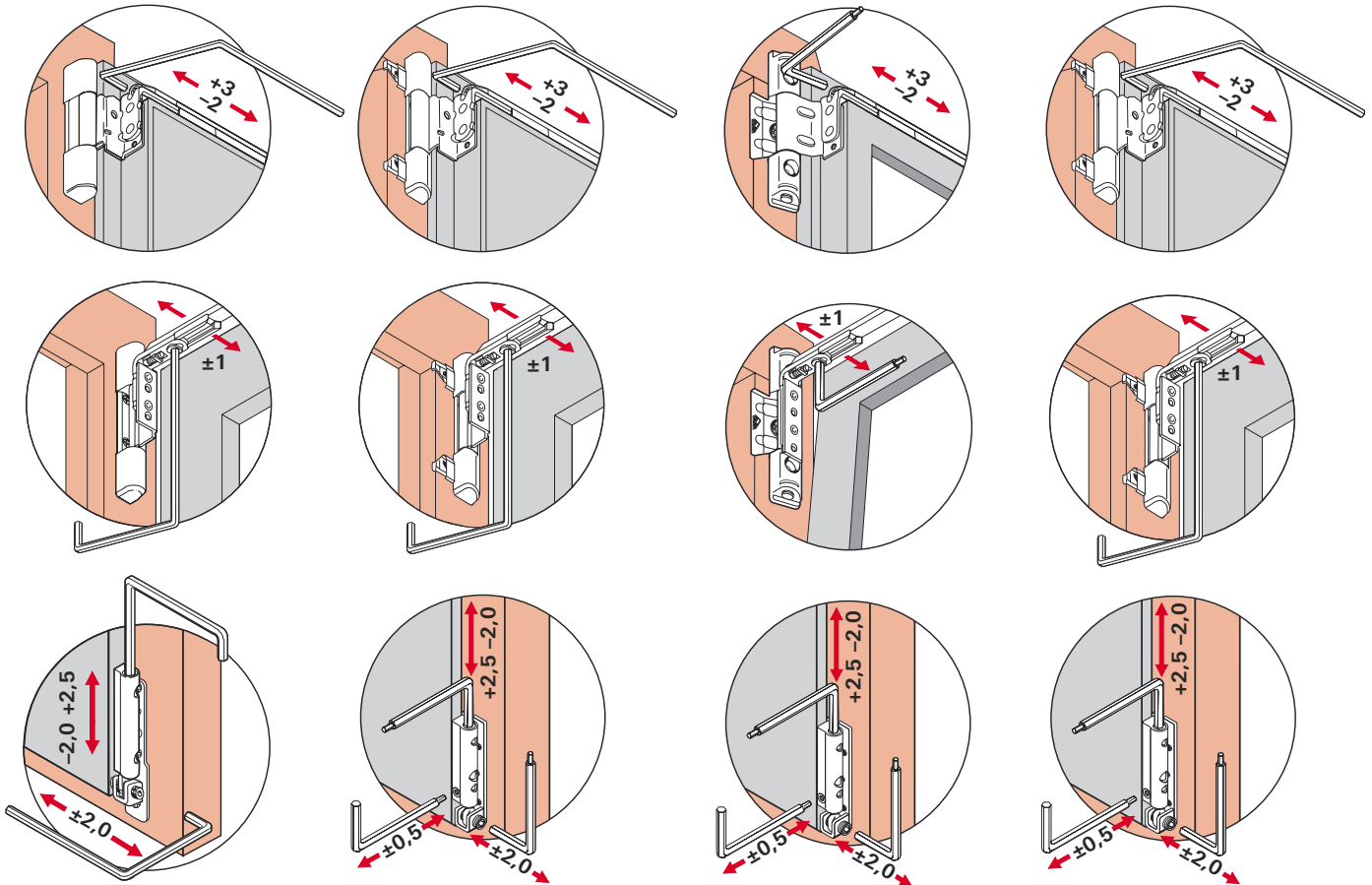
Adjustments on Roto hardware may only be carried out by authorised qualified personnel.

PVC windows and doors
Hinge side K

Hinge side A*

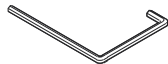
Timber windows and doors
Hinge side E5

Hinge side A*

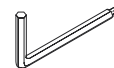


Adjustments tools:

Allen-key 4 mm
P 010 A 2100



Allen-key 2,5/4 mm
P 010 A 2400



*The indicated adjustment dimensions change A upon use of cover caps (sash stay bearing / corner pivot rest) and sash corner

Roto Frank AG
Stuttgarter Straße 145-149
D-70771 Leinfelden-Echterdingen
Germany

Telephone: +49 711 7598-0
Telefax: +49 711 7598-253
E-Mail: info@roto-frank.com
Internet: www.roto.de

Locking cam adjustment instructions



Locking cam **E**

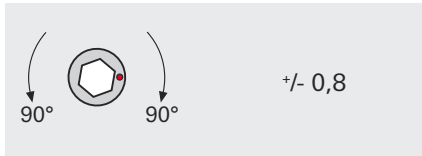
Adjustment range in °

Gasket-compression ad in mm

Initial position



-



+/- 0,8

Locking cam **P**

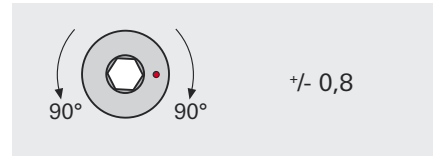
Adjustment range in °

Gasket-compression ad in mm

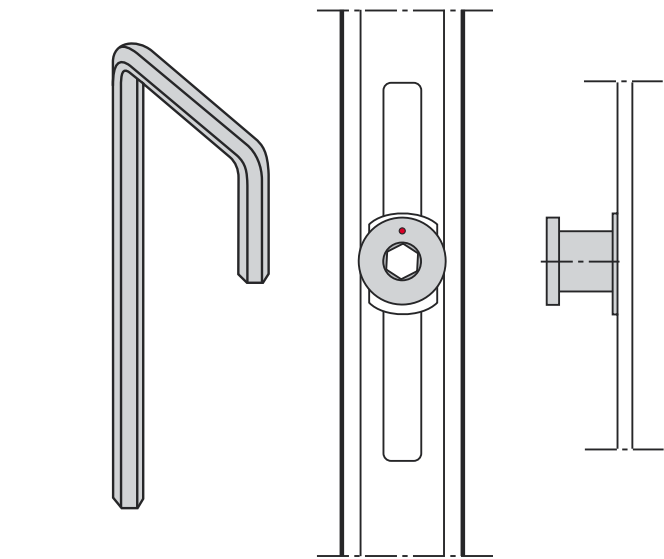
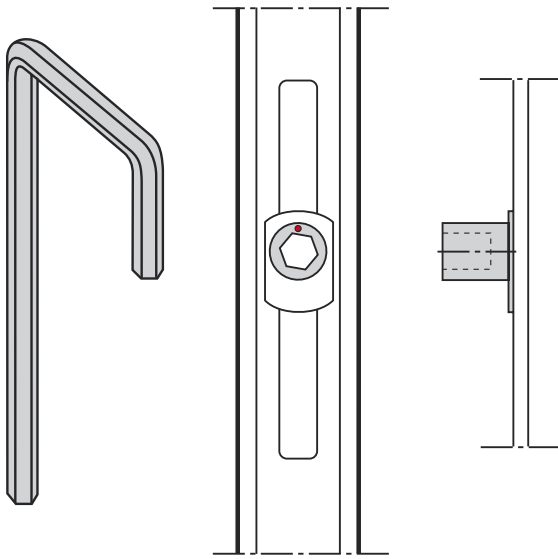
Initial position



-



+/- 0,8



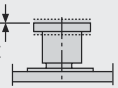
Locking cam **V**

Adjustment range in °

Gasket-compression ad in mm



Height-adjustment in mm



0 = Initial position

Initial position



-

-



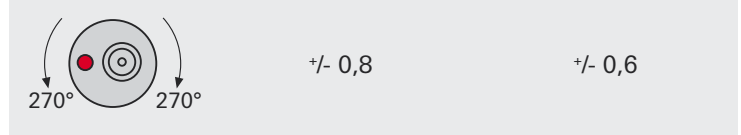
+/- 0,8

+/- 0,2



-

+/- 0,4



+/- 0,8

+/- 0,6



-

+/- 0,8

